

ROBOT MANAGER

HIGHLY FUNCTIONAL WINDOWS-BASED COMMUNICATION

KEY BENEFITS

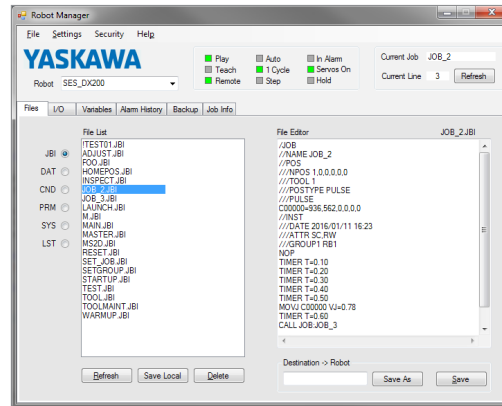
Communicate directly with robot controller utilizing high-speed Ethernet protocol

Automates backup of robot data without manual intervention

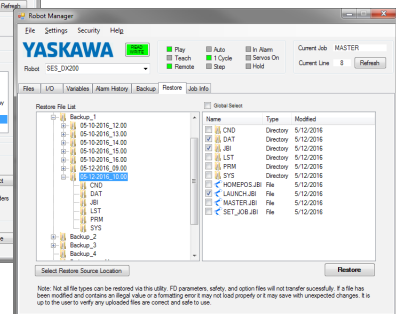
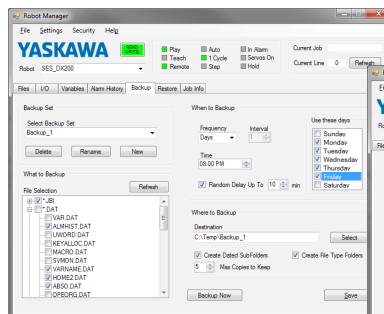
View complete alarm history

Package includes:

- Installation program
- Hardware key
- User manual



- Windows® PC software application that allows users to view and edit robot files.
- Users can create backup sets that designate files, location and schedule. A backup set runs independent of the application using Windows Task Scheduler. Files can be restored from previous backups.
- Administrative user can assign two levels of user access: VIEW and EDIT.
- View and/or edit robot jobs and robot variables. Robot jobs can be re-loaded to the robot controller.
- View real time job execution.
- View real time status of robot I/Os and variables.
- Allows network inputs to be forced on/off.
- Robot errors and alarms can be viewed and reset.
- Robot Manager can be used with any Yaskawa robot controller that supports high-speed E-Server function, including:
 - DX200
 - DX100 (using robot software version DS2.07.00A-00 and above)
 - FS100
- Minimum system requirements:
 - Windows XP or Windows 7 (x86 and x64 bit)
 - Windows administrator level account



YASKAWA AMERICA, INC. 100 Automation Way | Miamisburg, OH 45342
937.847.6200 | motoman.com