

ROBOTPRO WEB

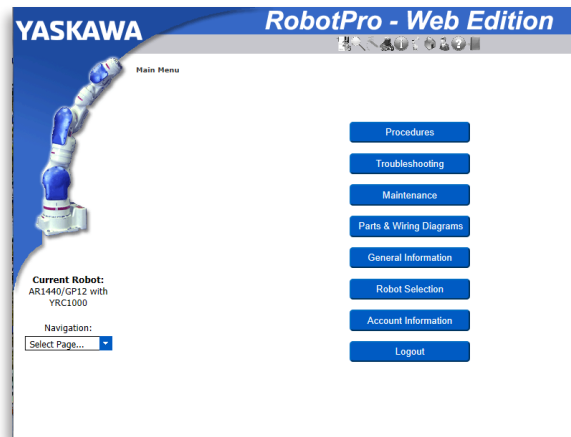
WEB-BASED ROBOT MAINTENANCE PACKAGE

KEY BENEFITS

- Quickly identify problems through troubleshooting
- Repair robots with minimal training
- Robot uptime is optimized

REQUIREMENTS

- High-speed internet connection
- Modern web browser



- Optimize your robot's uptime and minimize repair costs with RobotPro, a web-based expert maintenance system with an easy-to-use graphical user interface.
- RobotPro features effective step-by-step instructions for maintenance, troubleshooting and repair. It is tailored to specific robot and controller models.
- This comprehensive support tool includes:
 - A preventative maintenance schedule with links to procedures
 - Interactive troubleshooting to quickly pinpoint cause of problem through a series of questions
 - Descriptive test and repair procedures with illustrative graphics
 - Easy access to wiring diagrams, illustrated parts lists (not available for all models), spare parts lists

TROUBLESHOOTING

- Immediate access to:
 - Wiring diagrams
 - Proper voltages
 - Component locations
 - Adjustment procedures
- Question/answer procedure – Approximately 50 percent of industrial downtime can be attributed to the troubleshooting process. RobotPro prompts you through a Q&A procedure to quickly identify the cause of an alarm or error, reducing downtime.

- Cause of problem – Once enough information is collected, RobotPro displays the cause of the problem and procedure(s) to correct it. Yaskawa Motoman's own field service representatives use these features to diagnose errors and alarms.

SIMPLIFY REPAIR PROCEDURES

- Examples:
 - Motor replacement
 - Drive unit replacement
 - Fuse replacement
 - Servopack replacement
- RoboPro provides you with proper steps and detailed instructions to correct the problem. Part drawings, diagrams, schematic wiring drawings, parts lists and photographs are quickly accessible. Easy-to-read annotated color images are included.
- Since RobotPro is online, you can easily use the software anywhere internet access is available to locate, review, and use recommended repair procedures.

NOTE: No yearly subscription fees required.

MAINTENANCE SCHEDULE

- Life cycle information – Specific preventative maintenance details are provided in a procedural format that covers daily inspection tasks through 36,000 operating hours.
- Checklists – Includes links to procedures based upon robot configuration.

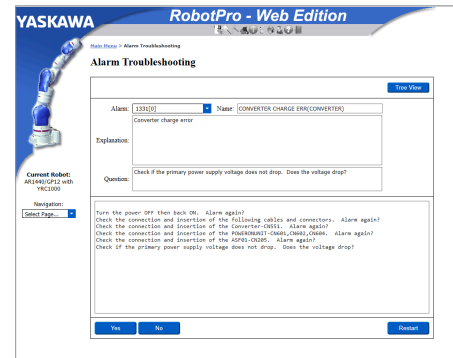
PREVENTATIVE MAINTENANCE

- Examples:
 - Lubricate robot axes
 - Inspect robot and controller
 - Replace wiring harness
 - Replace battery in controller
- Illustrated parts list – Provides ability to locate specific parts and part numbers.
- Detailed procedures – Proper preventative maintenance maximizes the robot's uptime and production. RobotPro's detailed procedures and illustrations simplify maintenance to ensure that the robot remains in peak operating condition.

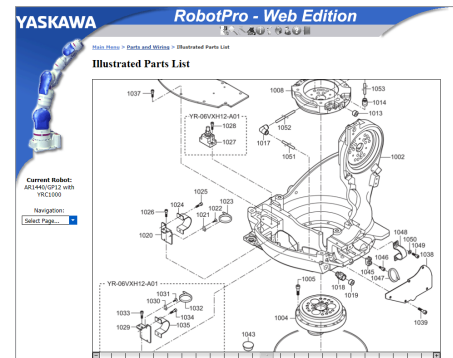
AVAILABLE MODELS

YRC1000			
AR1440/GP12	AR1730/GP25	GP50	GP35L
GP7††	AR2010/GP25-12	GP215	AR3120/GP20HL
GP8††			
DX200			
MA2010	MS100 II	MH50 II	MA1440
MH12	MH24		
DX100			
MA1400	MH5*	MH50-20	HP20D
MA1900	MH50	MPL160	ES165D (MH)
MA3100			
NX100			
EA1400N	EPL80	ES200N	HP6†
EA1900N	EPL160	IA20	HP20
SSA2000	ES165N	HP3**	HP20-6
HP50	HP50-20	HP165	
MP2300			
AutoSorter III			

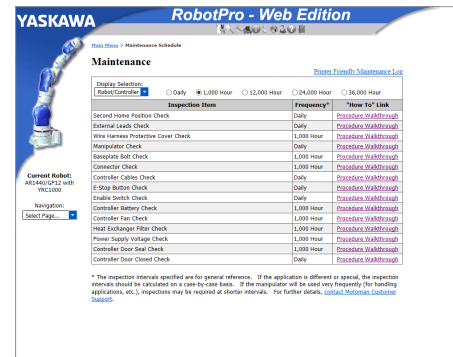
* Includes DXM100 controller only
 ** Includes NX100, NXM100 and NXC100 controllers
 † Includes NX100 and NXM100 controllers
 †† Includes YRC1000 and YRC1000micro controllers



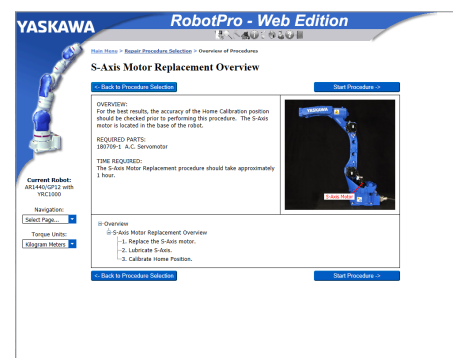
Troubleshooting Q&A



Illustrated Parts List



Maintenance Records



Procedures