

MOTOCOM SDK

COMMUNICATION SOFTWARE DEVELOPMENT KIT

KEY BENEFITS

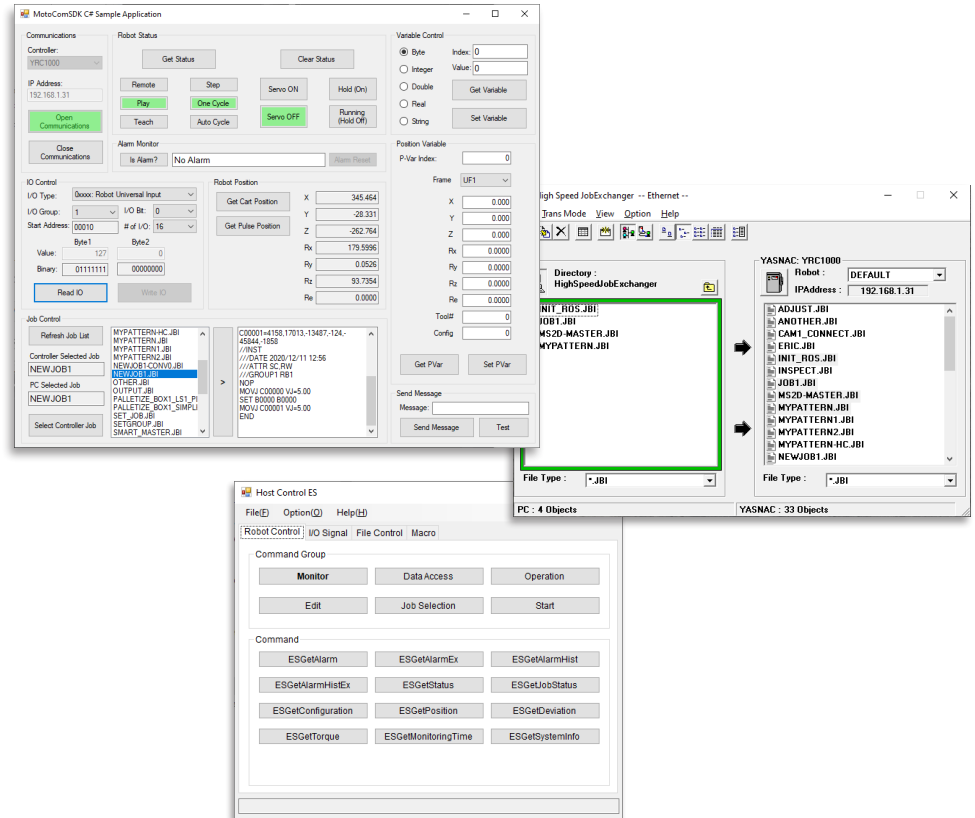
- Provides the ability to create customized applications
- Provides application examples
- Provides a flexible solution for your application

REQUIREMENTS

- Communication option enabled on controller
- Ethernet communication requires a robot Ethernet board (for XRC only)

COMPATIBILITY

- YRC1000 controller
- YRC1000micro controller
- FS100 controller
- DX200 controller
- DX100 controller
- NX100 controller
- NXC100 controller
- XRC controller



- Robot communication software development kit that provides a developer with the capability to create custom applications that communicate with Yaskawa robots.
- Can be used to control a robot and its data through a communication connection.
- Allows user to upload*, download, and delete** files (JBI, DAT, PRM, SYS and CND).
- Read and write* robot variable data (byte, integer, double, real, string and position).
- Read and write* robot I/O.
- Read robot status (play, teach, operating, etc.).
- Control operations (select job, servo on, start, etc.)

* Sending data to the controller is restricted while in operating mode, except for writing network I/O.
 ** Deletion is supported only for JBI files.